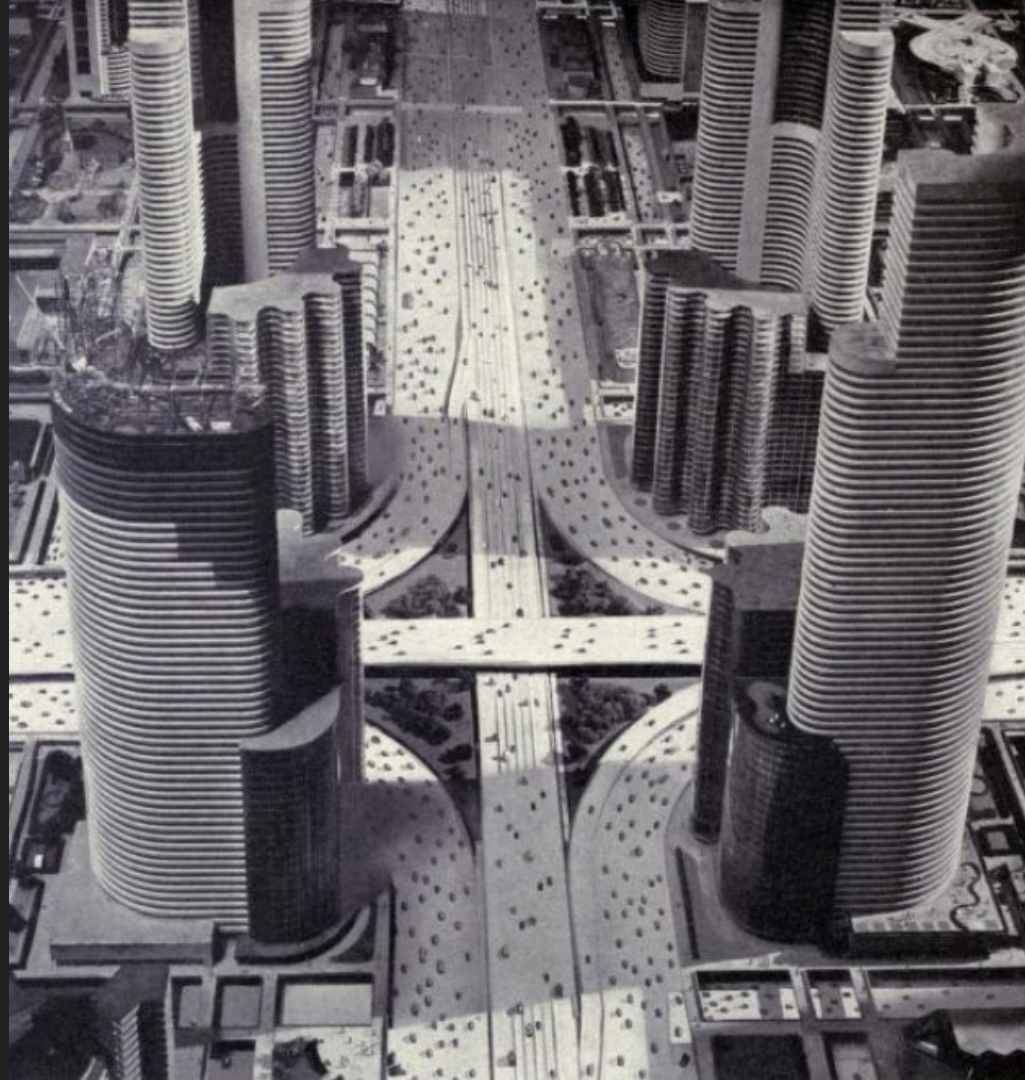


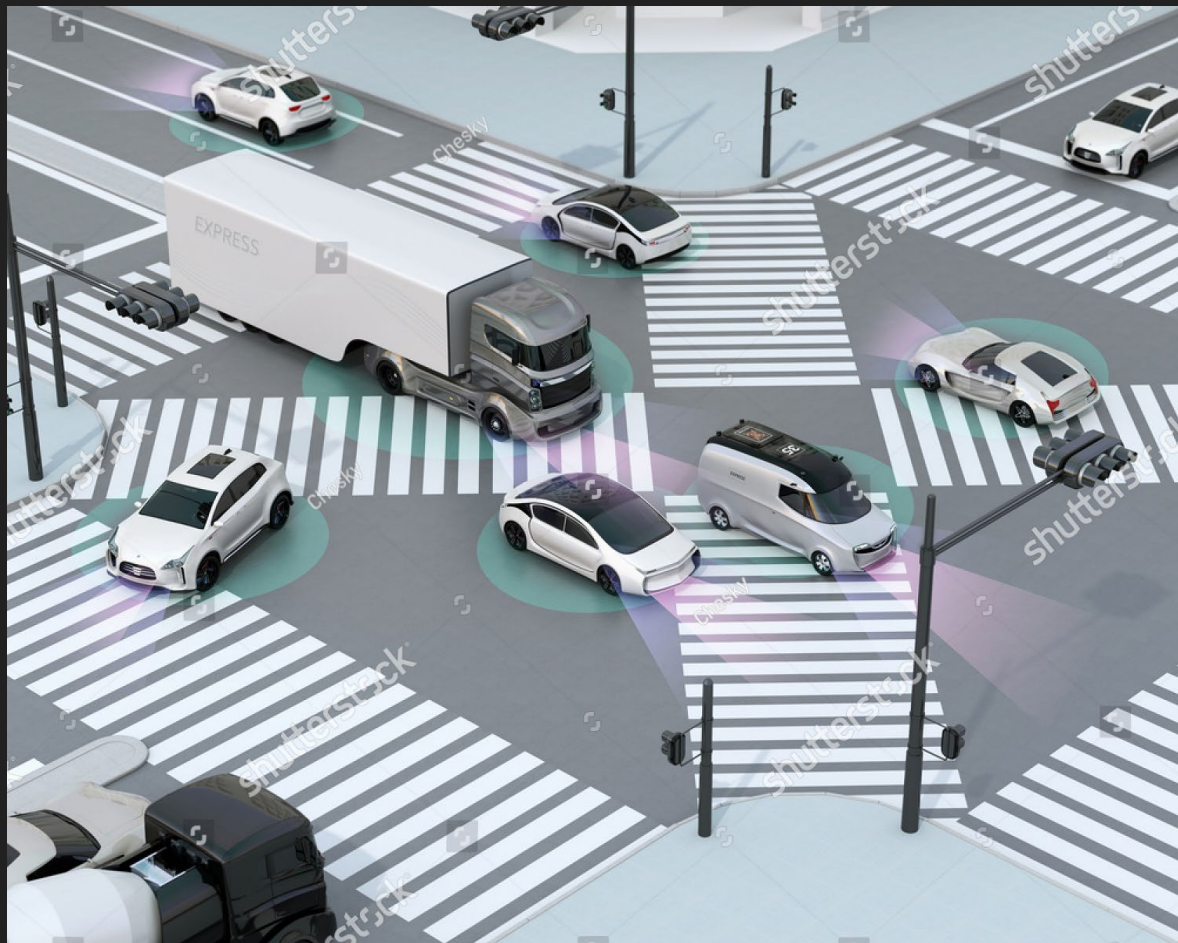
What world are we building towards?

**What kinds of communities do we
want?**



Futurama





“Efficiency is a normative goal: it favors particular principles and outcomes at the expense of others, typically altering how status and resources are distributed across society.”

- Ben Green, *Smart Enough Cities*

“A fair transportation system is a system that provides accessibility to (virtually) all.”

- Karl Martens, *Transport Justice*.

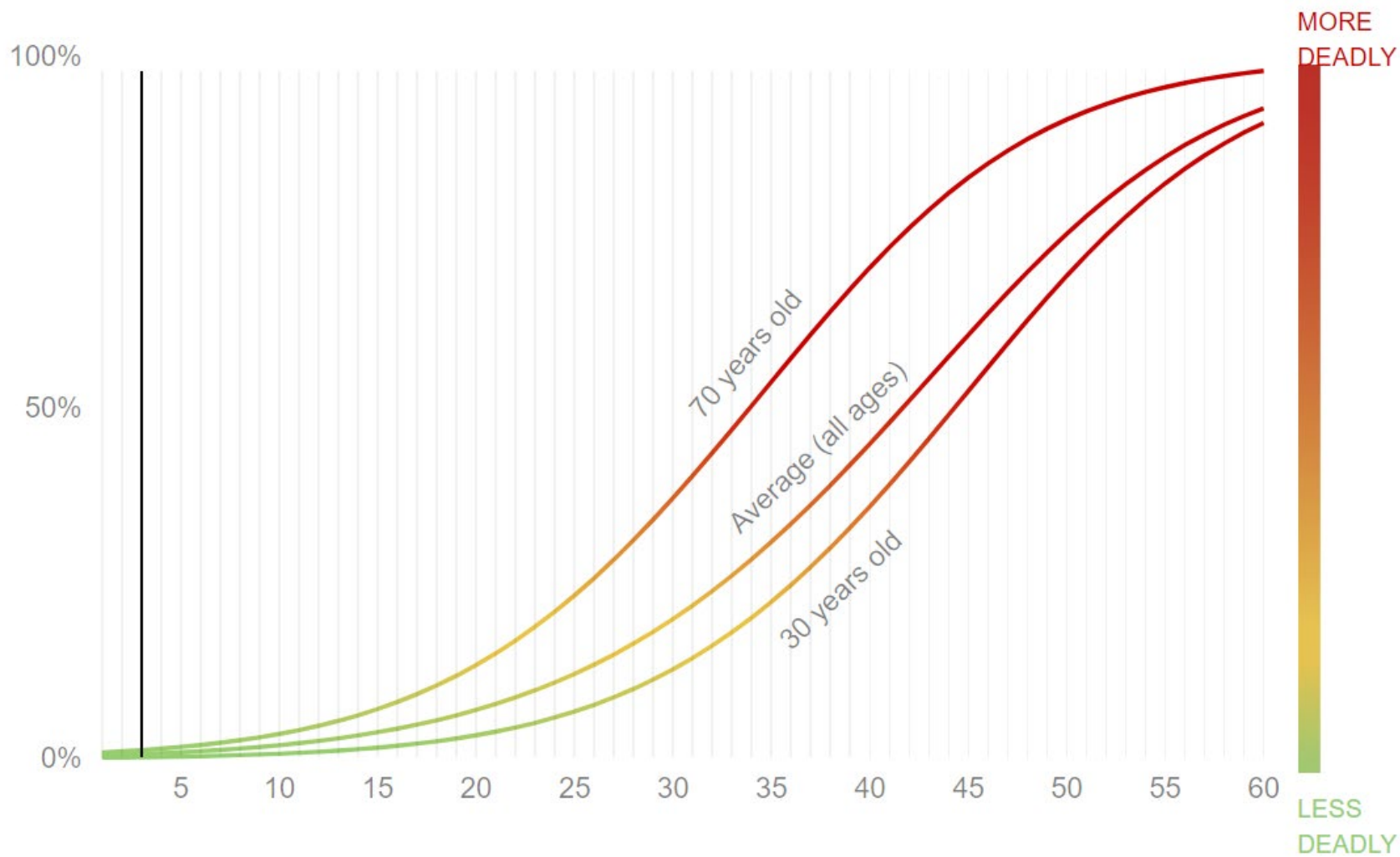


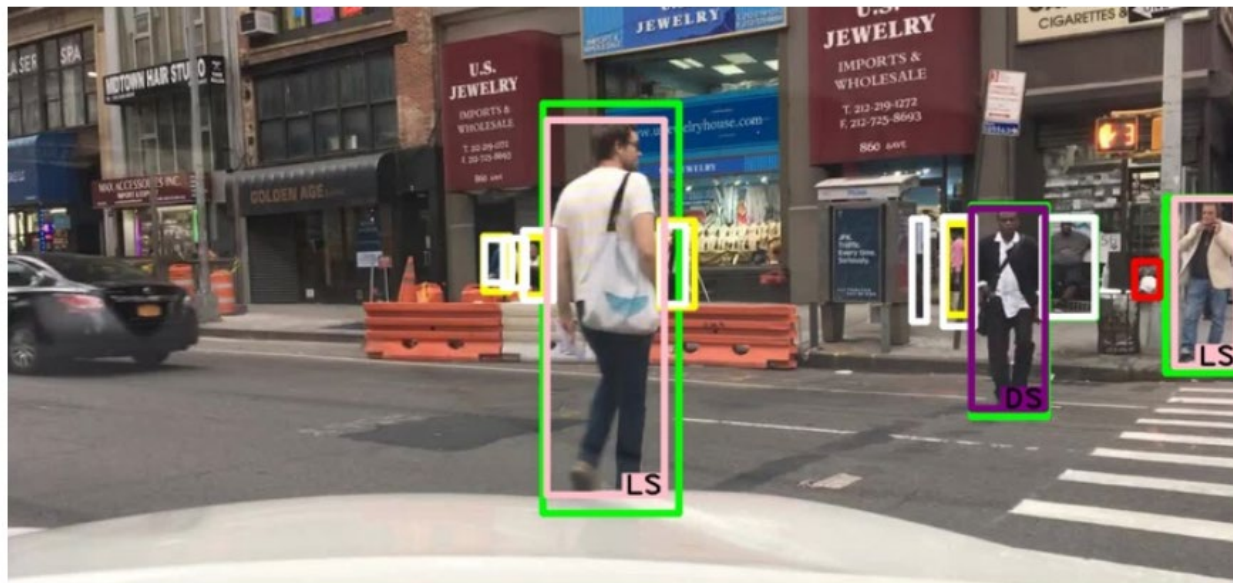


Photo Credit: AP



BRIEF

Study: AVs may struggle to detect pedestrians with dark skin



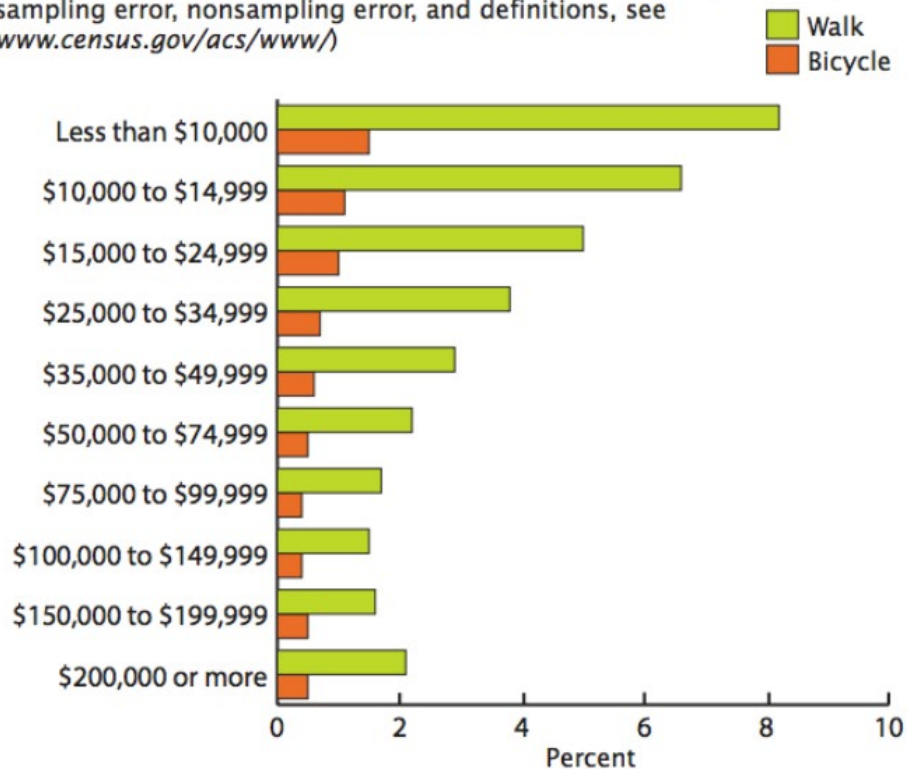
Credit: Faster R-CNN / Georgia Tech

Poor people are more likely to bike

Figure 11.

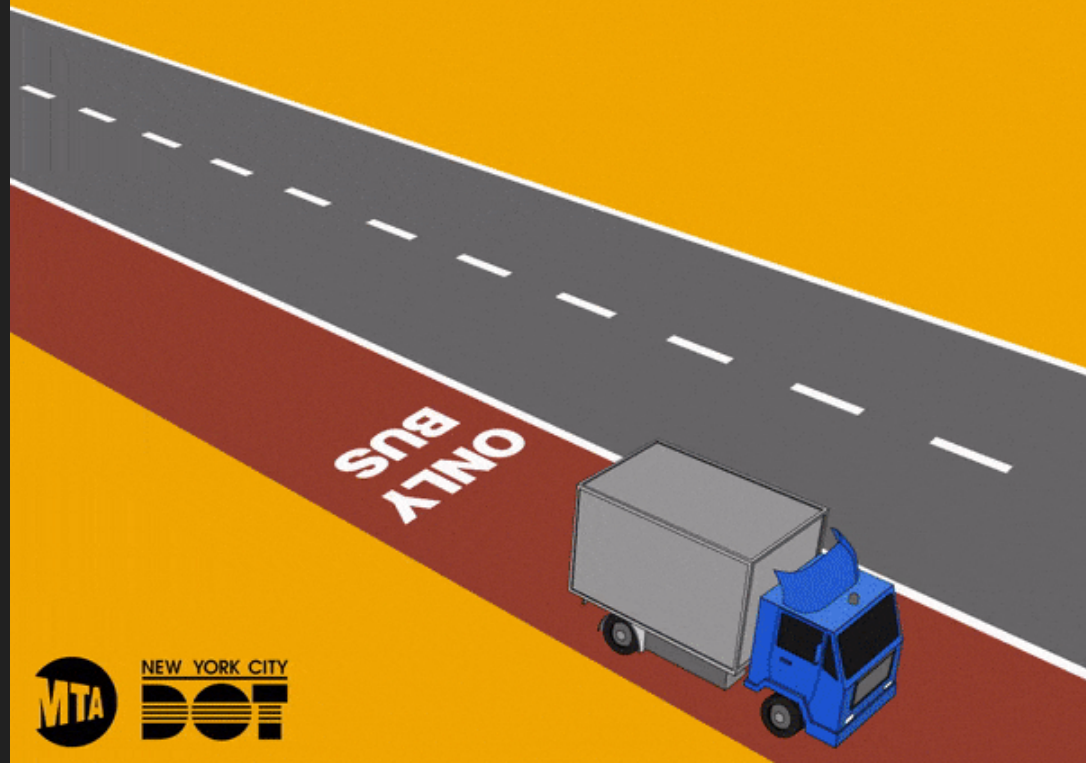
Walking and Bicycling to Work by Household Income: 2008-2012

(Data based on sample. For information on confidentiality protection, sampling error, nonsampling error, and definitions, see www.census.gov/acs/www/)

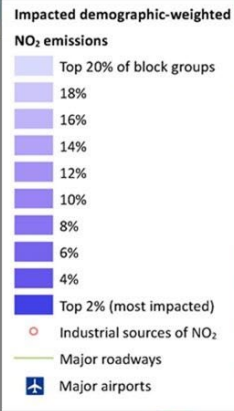




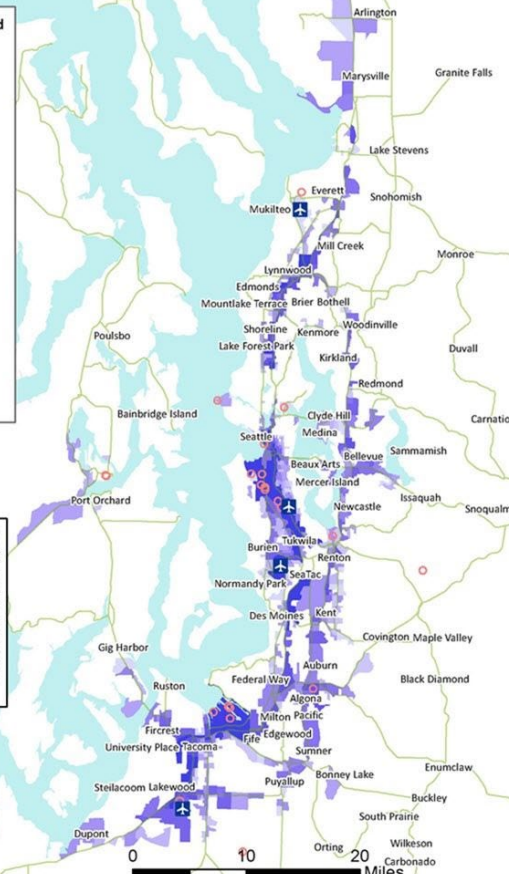
Bus lane enforcement cameras are coming to M15-SBS buses



Areas with the highest nitrogen dioxide emissions weighted by demographic factors (top 20% of Puget Sound census block groups)



Sources: All the NO₂ emissions are derived initially from the PSCAA 2005 Emission Inventory. Emissions from all diesel sources, industrial sources, and on-road vehicles were included. The diesel-derived NO₂ emissions were spatially distributed to block groups by the fraction of the diesel concentrations within Puget Sound from the EPA 2005 NATS. The gasoline vehicle-derived NO₂ emissions were spatially distributed to block groups using the 2005 WSDOT traffic counts per distance. Industrial source emissions from a PSCAA database were assigned to the containing block group. Only industrial sources over 25 tons of NO₂ are included here. All demographics and health information included here are from the PSCAA Community Air Tool (2012). This map is the NO₂ emissions as described above multiplied by the demographic score from the Community Air Tool (excluding air pollution factors).



Almost quarter of the people
in Washington State don't
have driver's licenses.

(5.7 million licenses/population of 7.5 million - WA DOL)



FACT SHEET

April 2019

RAINIER VALLEY SAFE STREETS

PROJECT OVERVIEW

Rainier Valley is a multifaceted urban community that's home to the most diverse residents in Seattle. Rainier Valley refers to the communities in southeast Seattle which are anchored together by Rainier Ave S. The people of Rainier Valley have come from all corners of the globe, bringing their own cultures, languages, and food with a shared determination to succeed in their new home.

This project will target underrepresented communities and communities of color with a range of information to increase knowledge and awareness such as specific safety and mobility information that focuses on their neighborhood. We impact behavior that contributing to crashes within the community such as speeding, distraction, impairment, and failure to yield to pedestrians.



Rainier Ave S has almost double the number of crashes per mile compared to Aurora Ave N and Lake city way NE even though they carry almost twice the vehicle volume. Between 2005 and 2014, there were nearly 3,600 total collisions along Rainier Ave S.

WALKING SAFETY TIPS



Look left, right, and left again at all intersections. Look before your cross. Drivers may not see you.



Make eye contact with people driving before crossing.



Pay attention. Don't be distracted by your cell phone or headphones.



Yield to pedestrians and people on bikes when turning.



Follow the instruction of crossing guards and school patrol.



Pay attention to your surrounding and walk, don't run across the street.

PROJECT INFORMATION & CONTACT

Mitchell Lloyd, Sr. Transportation Planner
(206) 258-1722 | mitchell.lloyd@seattle.gov



Seattle
Department of
Transportation

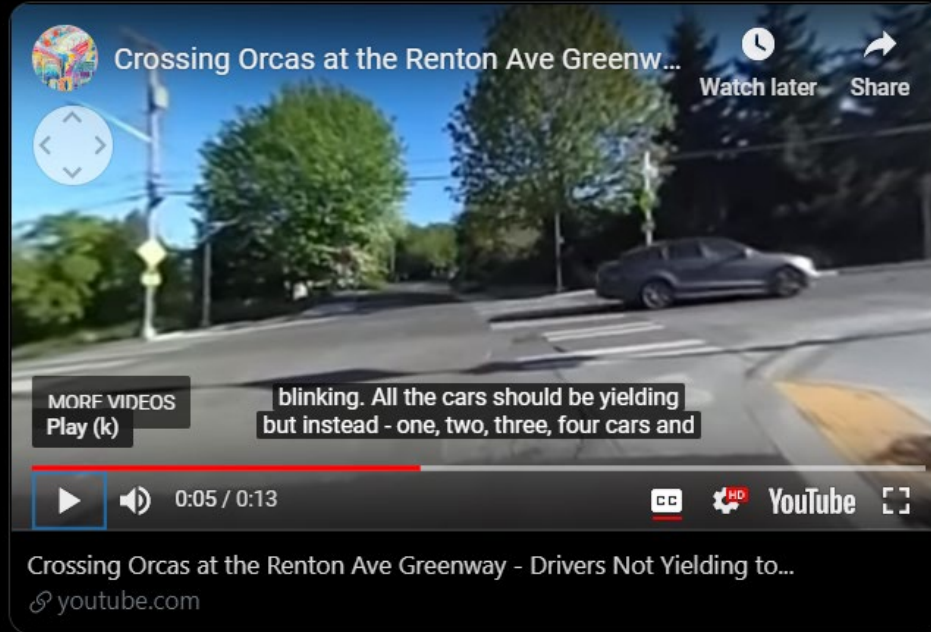
VISION
ZERO
SAFER. SMOOTHER. GREENER.

FOR LEAD BY
MOVE SEATTLE
SEATTLE MOVES SEATTLE



Make eye contact with people driving before crossing.

@ Renton Ave:



Crossing Orcas at the Renton Ave Greenw...

Watch later Share

MORF VIDEOS
Play (k)

blinking. All the cars should be yielding
but instead - one, two, three, four cars and

0:05 / 0:13

CC HD YouTube

Crossing Orcas at the Renton Ave Greenway - Drivers Not Yielding to...
youtube.com

<https://youtu.be/eVICJfov4Go>

Anna Zivarts @ AnnaZivarts

